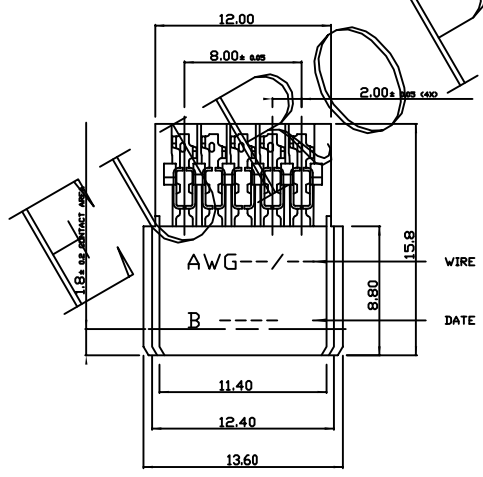
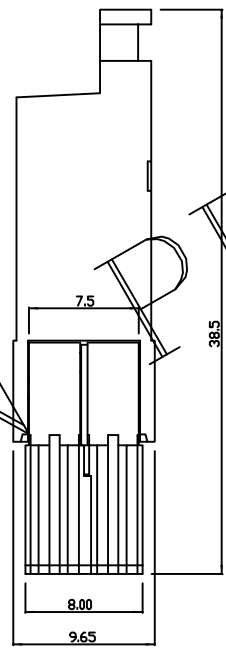
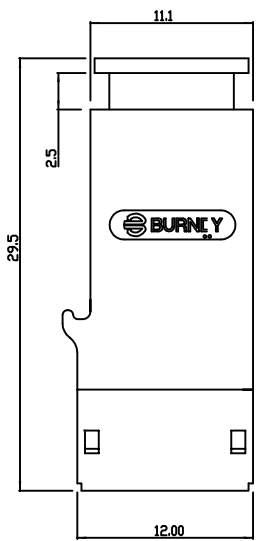
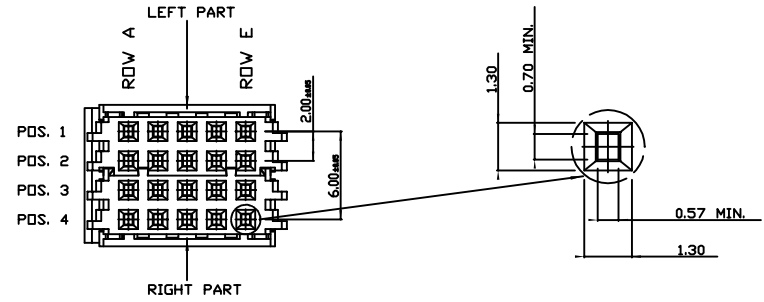
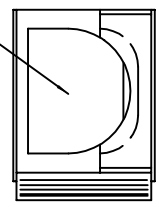


GEN. ST.	01	02	03	04	05	06	07	08	0D	50	60	70	80	90
INT. ST.	10	11	12	13	14	18	20	31	32	33	34	38	39	40

REV.	DATE	DESCRIPTION	BY	C'K'D'
A	13-10-11	CONVERSION REVISION III	KM	
B	22-11-15	1815-4741	DL	



MAX. CABLE Ø 7 MM MAX.



PEAN PROJECTION

PERFORMANCE CHARACTERISTICS:

VOLTAGE RATING : 250 VAC.
 CURRENT RATING : 1.0 A AT 70°C.
 INSULATION RESISTANCE : 10⁹ MO MIN.AFTER TEST.
 DIELECTRIC WITHSTANDING VOLTAGE : 1000 V.
 CONTACT RESISTANCE : 20 mΩ MAX. AFTER TEST.
 OPERATING T° : -55°C TO +125°C.
 INSERTION FORCE : 0.75 N MAX. PER CONTACT.
 WITHDRAWAL FORCE : 0.15 N MIN. PER CONTACT.

MATERIALS:

TERMINAL BLOCK : GLASS REINFORCED THERMOPLASTIC UL94-V0.
 COVER : POLYAMIDE-NYLON.
 CONTACTS : PHOSPHOR BRONZE.
 PLATING : Z1 : 0.40 μ Au MIN. OVER NI IN CONTACT AREA;
 PURE Sn DN IDC-TERMINAL.
 N9 : 0.75 μ Au MIN. OVER NI IN CONTACT AREA;
 PURE Sn DN IDC-TERMINAL.
 EB : 2.00 μ Au MIN. OVER NI IN CONTACT AREA;
 PURE Sn DN IDC-TERMINAL.

WIRE CHARACTERISTICS:

INSULATION DIAMETER 1,20 MM MAX.

PART NUMBERS:

HM2C01D0C010--LF CONNECTOR FOR WIRE SIZE AWG28,AWG30
 HM2C01D2C010--LF CONNECTOR FOR WIRE SIZE AWG26

MARKING:

PARTNUMBER	WIRE SIZE MARKING
HM2C01D0C010--LF	AWG28/30
HM2C01D2C010--LF	AWG26

1. THIS PRODUCT MEETS EUROPEAN UNION DIRECTIVES AND OTHER COUNTRY REGULATIONS AS DESCRIBED IN GS-22-008.
2. THE PRODUCT IS NOT INTENDED TO BE EXPOSED TO A MANUFACTURING SOLDER PROCESS.

RELEASED

1DEC ±0,2 1DEC 2DEC ±0,1 2DEC ANGLES ±1° HOEKEN	APPR. DATE -1-N DRAFT CHECKED 22-11-95 R.Verbeek	4X5 POS. HM2 CABLE CONNECTOR WITH HOOD AT. N. HM2C01D-C010--LF	SCALE 4/1
WE RESERVE THE RIGHT TO CHANGE DIMENSIONS OR REQUIREMENTS WITHOUT PRIOR NOTICE.	PROD. MGR. PRENG.MGR. PR.MGT.MGR.	FCI MEHELEN N.V. A SPINNINGSTRAAT 8, 2800 MEHELEN	
ALL DIMENSIONS IN MM	REFEREN S / REFERENTIE EP.M. 191-KD,S02,0B-C		

THIS IS OUR EXCLUSIVE PROPERTY. IT IS NOT TO BE COPIED, REPRODUCED OR TRANSMITTED IN ANY FORM OR BY ANY MEANS, ELECTRONIC OR MECHANICAL, INCLUDING PHOTOCOPYING, RECORDING, OR BY ANY INFORMATION STORAGE AND RETRIEVAL SYSTEM. ALL RIGHTS RESERVED. NIET IS ONZE EIGENDOM EN NIET MOET WERDEN VERMEERD, VERBODEN IS HET COPIËREN, REPRODUCEREN, OF OVERDRAAGEN VAN DEZE TEGENSTRAANDE. ALLE RECHTEN VOORBEHOUDEN.

PDM: Rev B

STATUS: Released